

South Hill Park Gardens, Hampstead NW3
£1,100,000 Leasehold. Sole Agents.





South Hill Park Gardens, Hampstead NW3

A beautifully presented, newly converted flat, with 2 double bedrooms and 2 bathrooms, arranged over the entire second floor of an imposing double fronted Victorian house.

The property offers well-proportioned accommodation including a 28' reception room, with a fireplace, and wooden floors throughout. The flat is larger than average, in this sought after enclave (approximately 900 sq ft) and is situated opposite the entrance to Hampstead Heath ponds.

28' reception room and study area • open-plan kitchen • 2 double bedrooms (1 ensuite)
• family bathroom • residents permit parking

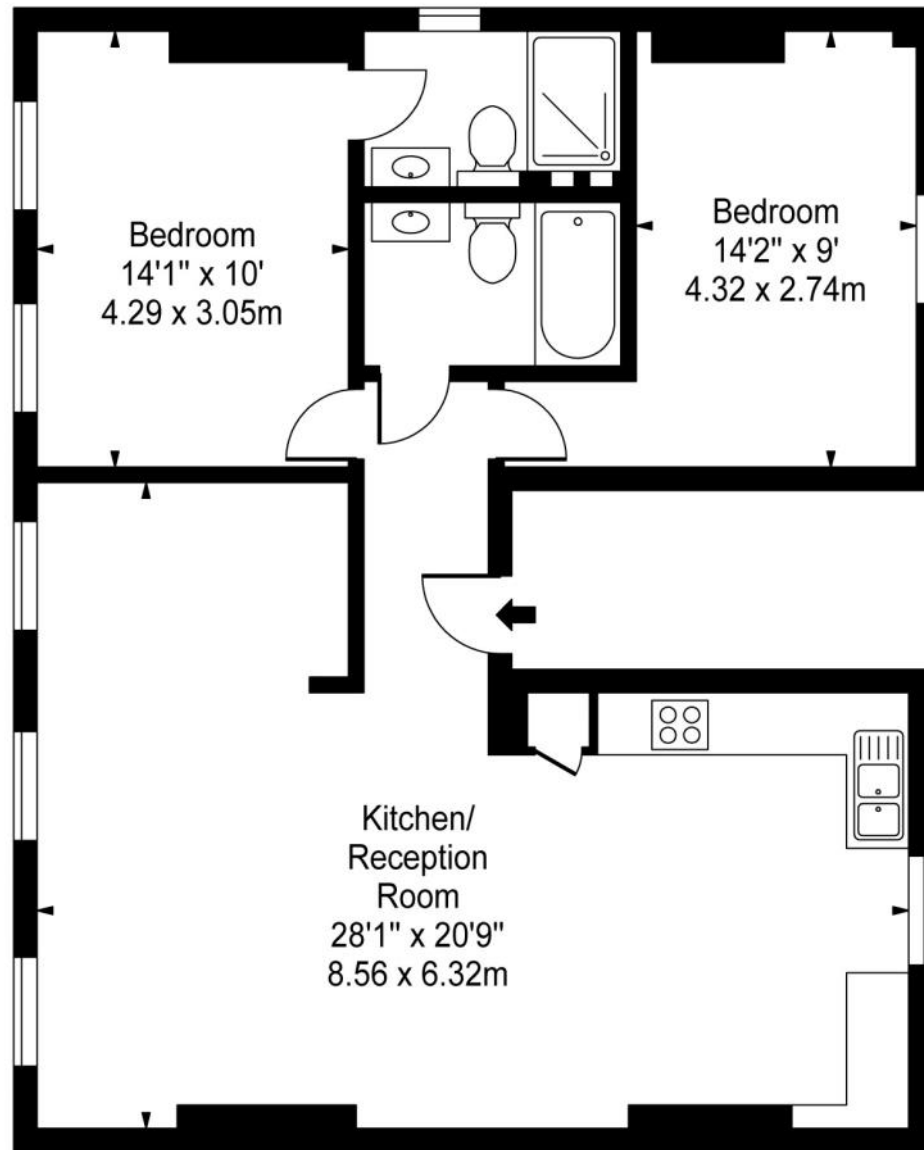
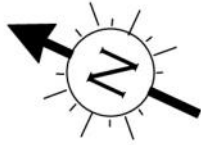
South End Green is a short stroll and has a great mix of local shops, café's, pubs & restaurants, in addition to the areas only Marks & Spencer.

The Hampstead Heath London Overground Station is a short walk and travel to Canary Wharf requires just a single change. The closest London Underground station is Belsize Park (Northern Line), approximately a 12 minute walk and there are frequent bus services from South End Green.

£1,100,000 Leasehold. Sole agents.



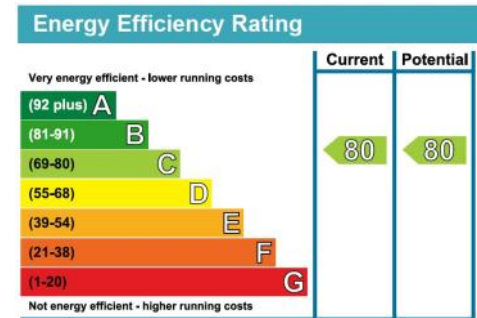




Second Floor

Approx. Gross Internal Area
892 Sq Ft - 82.86 Sq M

For Illustration Purposes Only - Not to Scale - Floor Plan by www.bkrfloorplans.co.uk
This floor plan should be used as a general outline for guidance only. Any intending purchaser or lessee should satisfy themselves by inspection, searches, enquiries and full survey as to the correctness of each statement. Any areas, measurements or distances quoted are approximate and should not be used to value a property or be the basis of any sale or let.



Telephone 020 7794 7794

